



4B | 4B1

Housing Layout
标准层户型

UNIT LAYOUT PLAN 户型鉴赏

+855 [Ⓢ] 023 951 666

- ◎ 216, Norodom Blvd, Sangkat Tonle Bassac, Khan Chamkamorn, Phnom Penh
- ◎ 项目地址: 柬埔寨王国金边市桑园区 百色河分区 诺罗敦大道216号

This document is intended solely to provide relative information, product details are subject to the final Agreement or Contract executed by the Parties

本资料旨在提供相关信息, 产品细节以最后文件及双方签订合同为准

— THE MANSION HOUSE —

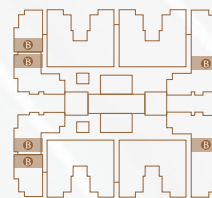


Housing Layout 标准层户型

4B / 4B1

Build-up Area/建筑面积: Around 41.27m²

Single Room / 单间
 One Kitchen / 一厨
 One Bathroom / 一卫
 One Balcony / 一阳台



This suite is compact, sufficiently use the space to satisfy practical needs.

户型紧凑，面积充分利用，满足实用性需求；

The bedroom is attached with balcony for overlooking the infinite scenery.

景观阳台与卧室融汇贯通，将无限风景纳入室内。



4C | 4C1

Housing Layout
标准层户型

UNIT LAYOUT PLAN 户型鉴赏

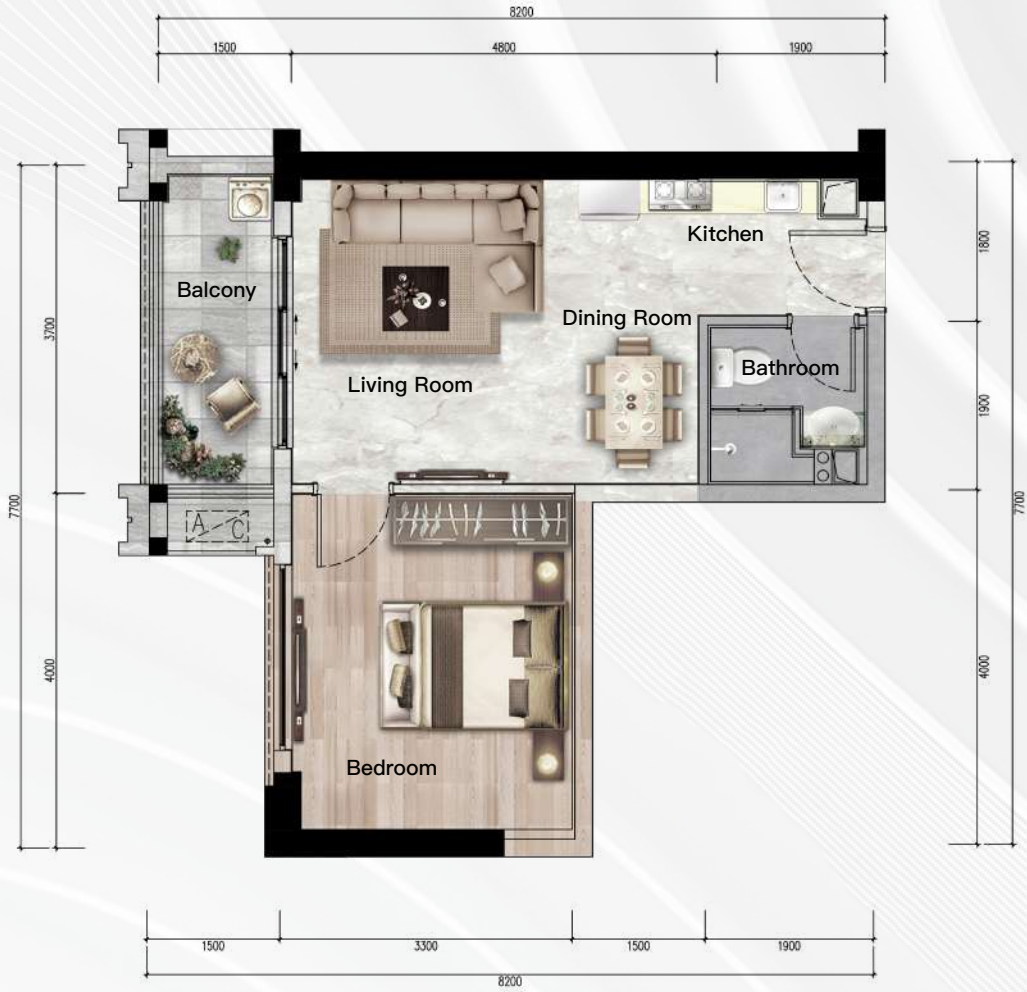
+855 **023 951 666**

- 216, Norodom Blvd, Sangkat Tonle Bassac, Khan Chamkamorn, Phnom Penh
- 项目地址: 柬埔寨王国金边市桑园区 百色河分区 诺罗敦大道216号

This document is intended solely to provide relative information, product details are subject to the final Agreement or Contract executed by the Parties

本资料旨在提供相关信息, 产品细节以最后文件及双方签订之合同为准

— T H E M A N S I O N H O U S E —

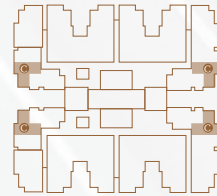


Housing Layout 标准层户型

4C / 4C1

Build-up Area/建筑面积: Around 52.87-60.00m²

- One Bedroom / 一室
- One Dining Room & One Living Room / 二厅
- One Kitchen / 一厨
- One Bathroom / 一卫
- One Balcony / 一阳台



This suite is compact, sufficiently use the space to satisfy practical needs.

户型紧凑，面积充分利用，满足实用性需求；

Living room, dining room and balcony are connected in one line to form large space which is an important measure of a comfortable life.

客厅、餐厅、阳台一线相连，豁达空间，尽显舒适生活尺度。



4D

Housing Layout
标准层户型

UNIT LAYOUT PLAN 户型鉴赏

+855 [☎] 023 951 666

- ◎ 216, Norodom Blvd, Sangkat Tonle Bassac, Khan Chamkamorn, Phnom Penh
- ◎ 项目地址: 柬埔寨王国金边市桑园区 百色河分区 诺罗敦大道216号

This document is intended solely to provide relative information, product details are subject to the final Agreement or Contract executed by the Parties

本资料旨在提供相关信息, 产品细节以最后文件及双方签订合同为准

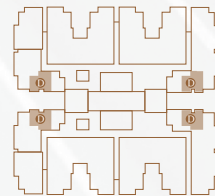
— T H E M A N S I O N H O U S E —



4D Housing Layout
标准层户型

Build-up Area/建筑面积: Around 42.97m²

- One Bedroom / 一室
- One Dining Room & One Living Room / 二厅
- One Kitchen / 一厨
- One Bathroom / 一卫



This suite is compact, sufficiently use the space to satisfy practical needs.

户型紧凑，面积充分利用，满足实用性需求；

The bathroom is considerably designed to day zone and wet zone which has explicit functions.

卫生间贴心设计干湿分区，功能明确；

The design of bay window of bedroom make the room bright and clean.

卧室飘窗设计，令室内一片明净；

The space structure of large, wide living room is open and bright to highlight the different style.

大面宽客厅空间构造，明亮开阔，彰显别样风范。



4E

Housing Layout
标准层户型

UNIT LAYOUT PLAN 户型鉴赏

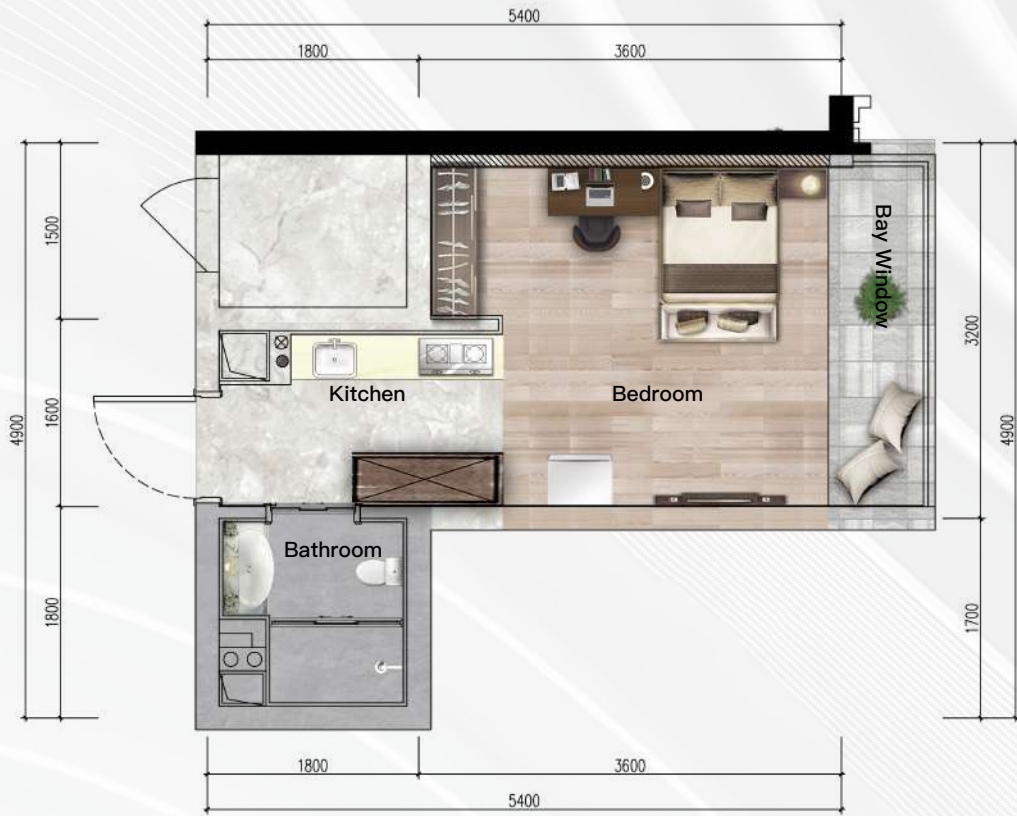
+855 [Ⓢ] 023 951 666

- 216, Norodom Blvd, Sangkat Tonle Bassac, Khan Chamkamorn, Phnom Penh
- 项目地址: 柬埔寨王国金边市桑园区 百色河分区 诺罗敦大道216号

This document is intended solely to provide relative information, product details are subject to the final Agreement or Contract executed by the Parties

本资料旨在提供相关信息, 产品细节以最后文件及双方签订合同为准

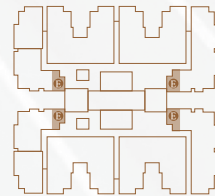
— T H E M A N S I O N H O U S E —



4E Housing Layout
标准层户型

Build-up Area/建筑面积: Around 41.27m²

Single Room / 单间
One Kitchen / 一厨
One Bathroom / 一卫



This suite is compact, sufficiently use the space to satisfy practical needs.

户型紧凑，面积充分利用，满足实用性需求；

The bedroom is attached with bay window for overlooking the infinite scenery.

大尺寸飘窗设计，令室内一片明净。



4F | 5F1

Housing Layout
标准层户型

UNIT LAYOUT PLAN 户型鉴赏

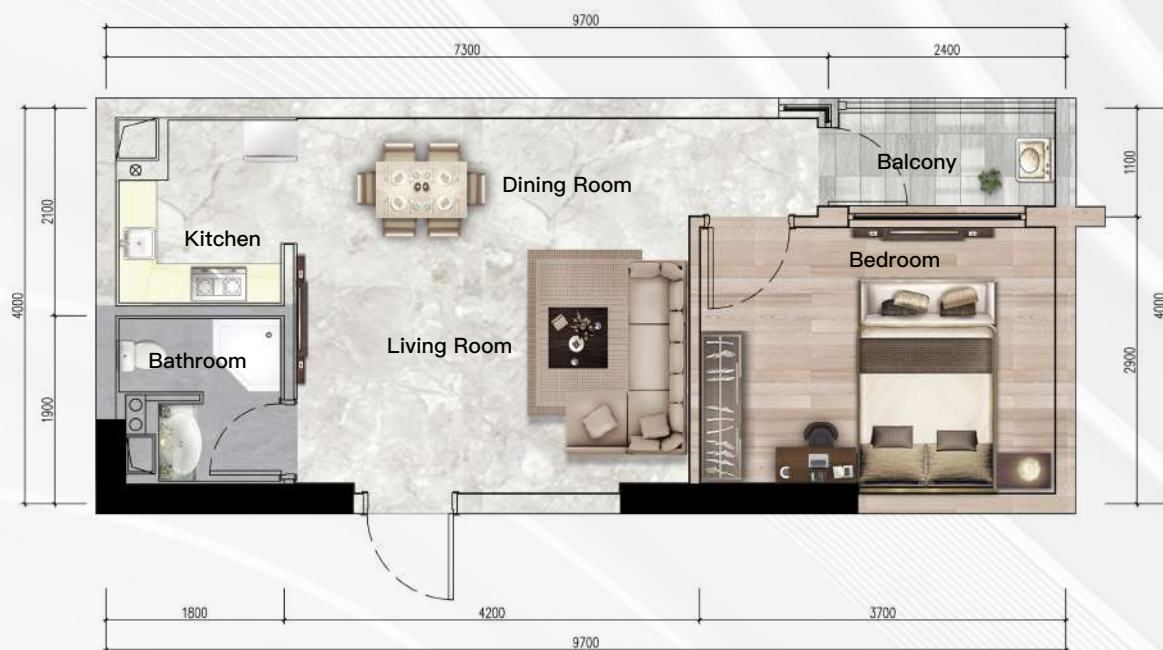
+855 [☎] 023 951 666

- ◎ 216, Norodom Blvd, Sangkat Tonle Bassac, Khan Chamkamorn, Phnom Penh
- ◎ 项目地址:柬埔寨王国金边市桑园区 百色河分区 诺罗敦大道216号

This document is intended solely to provide relative information, product details are subject to the final Agreement or Contract executed by the Parties

本资料旨在提供相关信息,产品细节以最后文件及双方签订合同为准

— T H E M A N S I O N H O U S E —

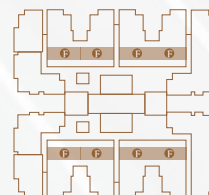


Housing Layout 标准层户型

4F / 5F1

Build-up Area/建筑面积: Around 36.91m²

- One Bedroom / 一室
- One Dining Room & One Living Room / 二厅
- One Kitchen / 一厨
- One Bathroom / 一卫
- One Balcony / 一阳台



This suite is compact, sufficiently use the space to satisfy practical needs.

户型紧凑，面积充分利用，满足实用性需求；

The bedroom is attached with independent balcony which has good ventilation and lighting.

卧室独立阳台设计，通风采光俱佳，清风暖阳惬意相伴；

The space structure of large, wide living room is open and bright, highlighting the different style.

大面宽客厅与阳台相连，明亮开阔，彰显别样风范。



G | GD

Housing Layout
标准层户型

UNIT LAYOUT PLAN
户型鉴赏

+855 [☎] 023 951 666

- ◎ 216, Norodom Blvd, Sangkat Tonle Bassac, Khan Chamkamorn, Phnom Penh
- ◎ 项目地址:柬埔寨王国金边市桑园区 百色河分区 诺罗敦大道216号

This document is intended solely to provide relative information, product details are subject to the final Agreement or Contract executed by the Parties

本资料旨在提供相关信息,产品细节以最后文件及双方签订合同为准

— T H E M A N S I O N H O U S E —

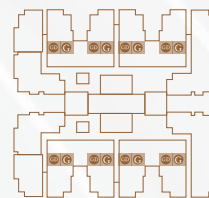


Housing Layout 标准层户型

G / GD

Build-up Area/建筑面积: Around 34.53-36.65m²

Single Room / 单间
One Kitchen / 一厨
One Bathroom / 一卫



This suite is compact, sufficiently use the space to satisfy practical needs.

户型紧凑，面积充分利用，满足实用性需求；

The bedroom and living room are divided clearly so that the daily life and entertainment will not interfere with each other.

客厅与卧室分区明确，起居娱乐互不干扰；

The window connected with hanging garden to enjoy refreshing breeze and sunshine.

宽景飘窗与空中花园相连，清风暖阳惬意相伴。



J

Housing Layout
标准层户型

UNIT LAYOUT PLAN 户型鉴赏

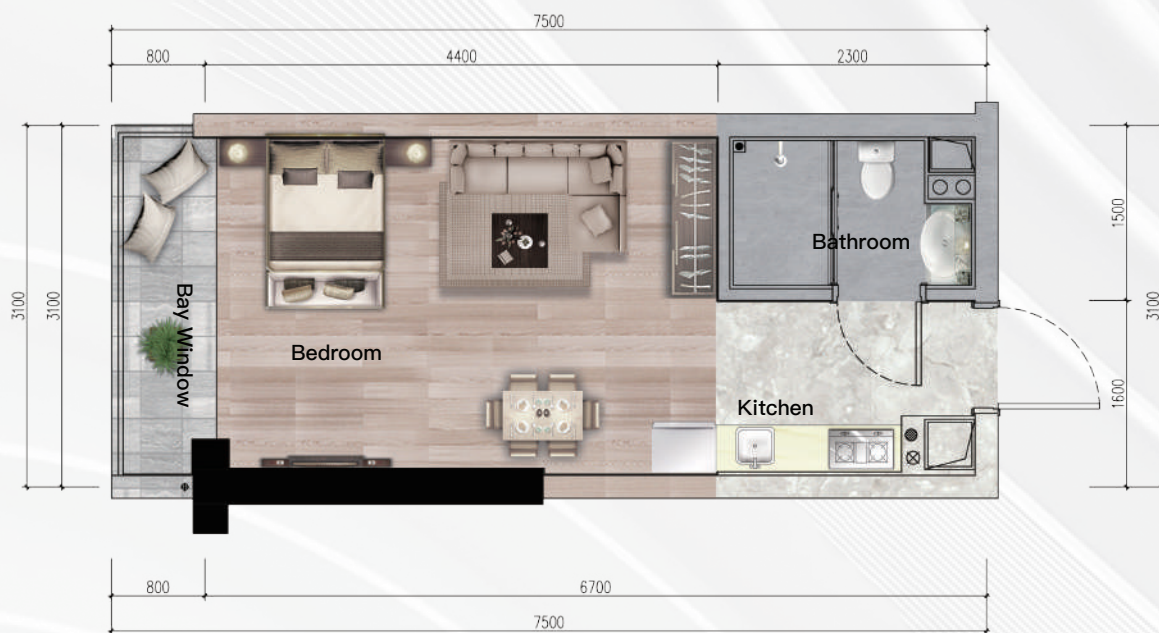
+855 **023 951 666**

- ◎ 216, Norodom Blvd, Sangkat Tonle Bassac, Khan Chamkamorn, Phnom Penh
- ◎ 项目地址:柬埔寨王国金边市桑园区 百色河分区 诺罗敦大道216号

This document is intended solely to provide relative information, product details are subject to the final Agreement or Contract executed by the Parties

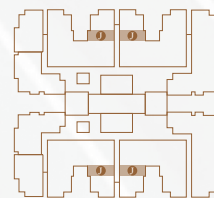
本资料旨提供相关信息,产品细节以最后文件及双方签订之合同为准

— T H E M A N S I O N H O U S E —



J Housing Layout
标准层户型
 Build-up Area/建筑面积: Around 28.93m²

Single Room / 单间
 One Kitchen / 一厨
 One Bathroom / 一卫



This suite is compact, sufficiently use the space to satisfy practical needs.

户型紧凑，面积充分利用，满足实用性需求；

The bedroom and living room are divided clearly so that the daily life and entertainment will not interfere with each other.

客厅与卧室分区明确，起居娱乐互不干扰。



K

Housing Layout
标准层户型

UNIT LAYOUT PLAN 户型鉴赏

+855 [☎] 023 951 666

- ◎ 216, Norodom Blvd, Sangkat Tonle Bassac, Khan Chamkamorn, Phnom Penh
- ◎ 项目地址: 柬埔寨王国金边市桑园区 百色河分区 诺罗敦大道216号

This document is intended solely to provide relative information, product details are subject to the final Agreement or Contract executed by the Parties

本资料旨在提供相关信息, 产品细节以最后文件及双方签订之合同为准

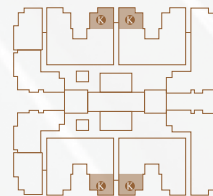
— T H E M A N S I O N H O U S E —



K Housing Layout
标准层户型

Build-up Area/建筑面积: Around 49.74m²

- One Bedroom /一室
- One Dining Room & One Living Room /二厅
- One Kitchen /一厨
- One Bathroom /一卫
- One Balcony /一阳台



This suite is square and transparent, reasonable segregation of living area from common activity area and explicit functional layout.

户型方正通透，紧凑合理，阳光清风随意流动；

The double halls are connected to form a large and wide living space.

双厅联动，宽敞大气，延伸生活空间；

The design of wide view balcony brought the sunlight into the room and make the life comfortable.

宽景阳台设计，阳光入室，今生活倍感舒适。



4A | 4A1 | H

Housing Layout
标准层户型

UNIT LAYOUT PLAN
户型鉴赏

+855 [☎] 023 951 666

- 216, Norodom Blvd, Sangkat Tonle Bassac, Khan Chamkamorn, Phnom Penh
- 项目地址: 柬埔寨王国金边市桑园区 百色河分区 诺罗敦大道216号

This document is intended solely to provide relative information, product details are subject to the final Agreement or Contract executed by the Parties

本资料旨在提供相关信息, 产品细节以最后文件及双方签订合同为准

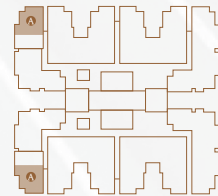
— T H E M A N S I O N H O U S E —



Housing Layout 标准层户型
4A/4A1/H

Build-up Area/建筑面积: Around 78.67-86.17m²

- Two Bedrooms/二室
- One Dining Room & One Living Room/二厅
- One Kitchen/一厨
- One Bathroom/一卫
- Two Balconies/双阳台



From Common Activity Area And Explicit Functional Layout This Suite Is Square And Transparent With Reasonable Segregation Of Living Area.

户型方正通透，动静分区合理，功能布局明确；

Two Big Bedrooms Are Attached With A Wide View Balcony For Bringing Scenery Inside Room And Living A Interest Life.

两大卧室均与大尺度宽景阳台相连，引风景入室，生活景致盎然；

Living Room, Dining Room And Balcony Are Connected In One Line To Form Large Space Which Is An Important Measure Of A Comfortable Life.

客厅、餐厅、阳台一线相连，豁达空间，尽显舒适生活尺度。

— T H E M A N S I O N H O U S E —

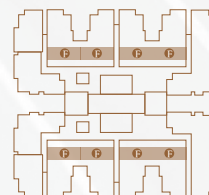


Housing Layout 标准层户型

4F / 5F1

Build-up Area/建筑面积: Around 36.91m²

Single Room / 单间
One Kitchen / 一厨
One Bathroom / 一卫



This suite is compact, sufficiently use the space to satisfy practical needs.
户型紧凑, 面积充分利用, 满足实用性需求;
The bedroom is attached with bay window for overlooking the infinite scenery.
大尺寸飘窗设计, 令室内一片明净。



M1

Housing Layout
标准层户型

UNIT LAYOUT PLAN

户型鉴赏

+855 [☎] 023 951 666

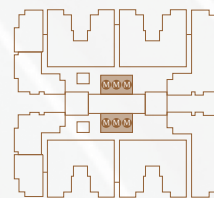
- 216, Norodom Blvd, Sangkat Tonle Bassac, Khan Chamkamorn, Phnom Penh
- 项目地址: 柬埔寨王国金边市桑园区 百色河分区 诺罗敦大道216号

— T H E M A N S I O N H O U S E —



M1 Housing Layout
标准层户型
 Build-up Area/建筑面积: Around 24.07m²

Single Room / 单间
 One Kitchen / 一厨
 One Bathroom / 一卫



This suite is compact, sufficiently use the space to satisfy practical needs.

户型紧凑，面积充分利用，满足实用性需求；

The bedroom is attached with bay window for overlooking the infinite scenery.

大尺寸飘窗设计，令室内一片明净。



L | 4L1

Housing Layout
标准层户型

UNIT LAYOUT PLAN 户型鉴赏

+855 [☎] 023 951 666

- ◎ 216, Norodom Blvd, Sangkat Tonle Bassac, Khan Chamkamorn, Phnom Penh
- ◎ 项目地址: 柬埔寨王国金边市桑园区 百色河分区 诺罗敦大道216号

This document is intended solely to provide relative information, product details are subject to the final Agreement or Contract executed by the Parties

本资料旨在提供相关信息, 产品细节以最后文件及双方签订合同为准

THE MANSION HOUSE

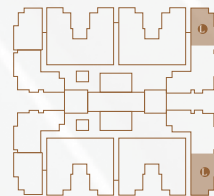


Housing Layout 标准层户型

L/4L1

Build-up Area/建筑面积: Around 110.57-128.02m²

- Three Bedrooms /三室
- One Dining Room & One Living Room / 二厅
- One Kitchen / 一厨
- Two Bathrooms / 二卫
- Two Balconys / 双阳台



This suite is square, transparent and gorgeous with reasonable segregation of functional layout.

户型方正, 阔绰大气, 通透明朗, 功能分区合理;

The design of double bathrooms provide more convenient for daily life.

双卫设计, 为居家生活增添更多便利;

Three big bedrooms are attached with large and wide view balconies for bringing scenery inside room and living a interest life.

三大卧室均与大尺度宽景阳台相连, 引风景入室, 生活景致盎然;

Living room, dining room and balcony are connected in one line to form a large space which is an important measure of a comfortable life.

客厅、餐厅、阳台一线相连, 豁达空间, 尽显舒适生活尺度。